

INDIANA

Members Credit Union

Keeping It Simple

MEMBER NEWSLETTER

JUNE 2025

NOW OFFERING HOMEREADY® LOAN PROGRAM!

The HomeReady® loan program offers qualifying buyers down payments as low as 3%. With the extension of a \$2,500 credit for eligible first-time homebuyers and consideration of positive rent payment history, a HomeReady® loan may be the key to getting you into your dream home.



HOME IMPROVEMENTS WITHIN YOUR REACH



Take Advantage of this Limited time offer! Use your IMCU Line-of-credit to enhance your home, take a vacation or pay off some debt! Advance an aggregate of \$10,000 or more from January 15 - July 31, 2025 and receive a special 3.9% APR¹ through December 31, 2025!

[APPLY NOW](#)

SAVE WITH A CERTIFICATE

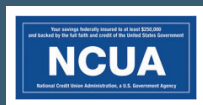


Take advantage of higher dividends and short-term commitment with a certificate.

[FIND OUT MORE](#)

 All branches will be
CLOSED
THURSDAY JUNE 19TH
for Juneteenth
and **FRIDAY, JULY 4TH** for
Independence Day

We are proud to have
received these awards
in Indiana!



INDIANAPOLIS
317.248.8556

TOLL FREE
1.800.556.9268

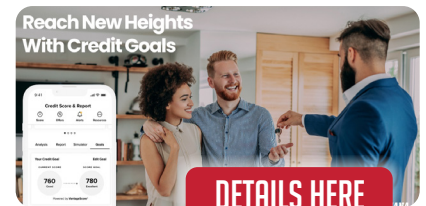
AUTO LOANS



Purchase or refinance!

[APPLY NOW](#)

ENROLL IN CREDIT SCORE & MORE

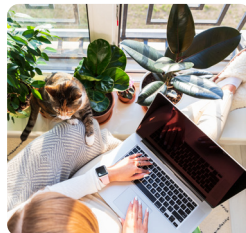


NEW IMPROVED DEBIT CARDS COMING UPDATE YOUR CONTACT INFO TODAY!

It's important to keep your contact information updated to ensure you receive all communications regarding your account with Indiana Members Credit Union by **July 31, 2025**.

To confirm and update your mailing address, phone number and/or email, you have the following options:

- Digital Banking: Log in to **Digital Banking**, select "Settings," then "Update Contact Info," choose the appropriate account, and make the necessary changes.
- Branch Visit: Visit any IMCU branch in person with your Driver's License or Government Issued Identification.
- Member Services: Call Member Services at 317.248.8556 or 800.556.9268.



FOLLOW US!



STAY INFORMED
WITH OUR BLOG! 

IMCU.COM

INDIANA Members Foundation

People Helping People

JOIN US AT OUR GOLF OUTING

Supporting:
Indiana Members
Foundation

July 21
The Hawthorns, Fishers

[MORE DETAILS](#)

GET THE MONEY YOU NEED FOR SCHOOL

Student loans from Indiana
Members Credit Union in
partnership with Sallie Mae®
could help!



[FIND OUT MORE](#)

NOTICE:

The Funds Availability
Policy has been revised to
reflect changes defined by
Regulation CC:

Effective May 8, 2025,
the first \$275 of a day's
deposits of local checks
will be available the first
business day after the
day of the deposit (unless
notice is provided).

INDIANAPOLIS
317.248.8556

TOLL FREE
1.800.556.9268

PROUD PARTNER OF THE FEVER & PACERS!



Get your Indiana
Fever or Pacers
Debit Card at any
IMCU branch!



MEMBER ADDED VALUE



GET YOUR
DISCOUNTED
TICKETS HERE



IMCU Members
can purchase
discounted tickets
to the
Indianapolis Zoo!

Stop in your
local branch
for details.



ON THE
SYMPHONY
PRAIRIE

CONNER
PRAIRIE



Scan the QR code to
get discounted tickets
through August 31,
2025 or stop in your
local branch!



INDIANA Members Investment Services



Gregg Perrey
Financial Advisor



Joe Waltermann
Financial Advisor

Indiana Members Investment Services is here to help IMCU members pursue their investment goals! Gregg Perrey and Joe Waltermann have years of experience and can offer knowledgeable and personalized investment strategies that fit your unique needs.

- Rollover Services
- IRAs and Roth IRAs
- Mutual Funds
- Retirement Planning
- Fixed Variable and Index Annuities

To learn more about the products and services visit **IMCU.COM** or call Indiana Members Investment Services directly at 317-610-3945, for a free no-cost, no-obligation appointment today!

Securities and advisory services are offered through LPL Financial (LPL), a registered investment advisor and broker-dealer (member FINRA/SIPC). Insurance products are offered through LPL or its licensed affiliates. Indiana Members Credit Union and Indiana Members Investment Services **are not** registered as a broker-dealer or investment advisor. Registered representatives of LPL offer products and services using Indiana Members Investment Services, and may also be employees of Indiana Members Credit Union. These products and services are being offered through LPL or its affiliates, which are separate entities from, and not affiliates of, Indiana Members Credit Union or Indiana Members Investment Services. Securities and insurance offered through LPL or its affiliates are:

Not Insured by NCUA or Any Other Government Agency	Not Credit Union Guaranteed	Not Credit Union Deposits or Obligations	May Lose Value
---	--------------------------------	---	----------------

Indiana Members Credit Union provides referrals to financial professionals of LPL Financial LLC ("LPL") pursuant to an agreement that allows LPL to pay Indiana Members Credit Union for these referrals. This creates an incentive for Indiana Members Credit Union to make these referrals, resulting in a conflict of interest. Indiana Members Credit Union is not a current client of LPL for advisory services. Please visit <https://www.lpl.com/disclosures/is-lpl-relationship-disclosure.html> for more detailed information. The LPL Financial registered representative(s) associated with this website may discuss and/or transact business only with residents of the states in which they are properly registered or licensed. No offers may be made or accepted from any resident of any other state.

IMCU.COM